



# What Works for Schools: Designing, implementing and evaluating education attainment programmes



**Dr. Liam O'Hare**

**Evidence and Social Innovation**

Centre for Evidence and Social Innovation

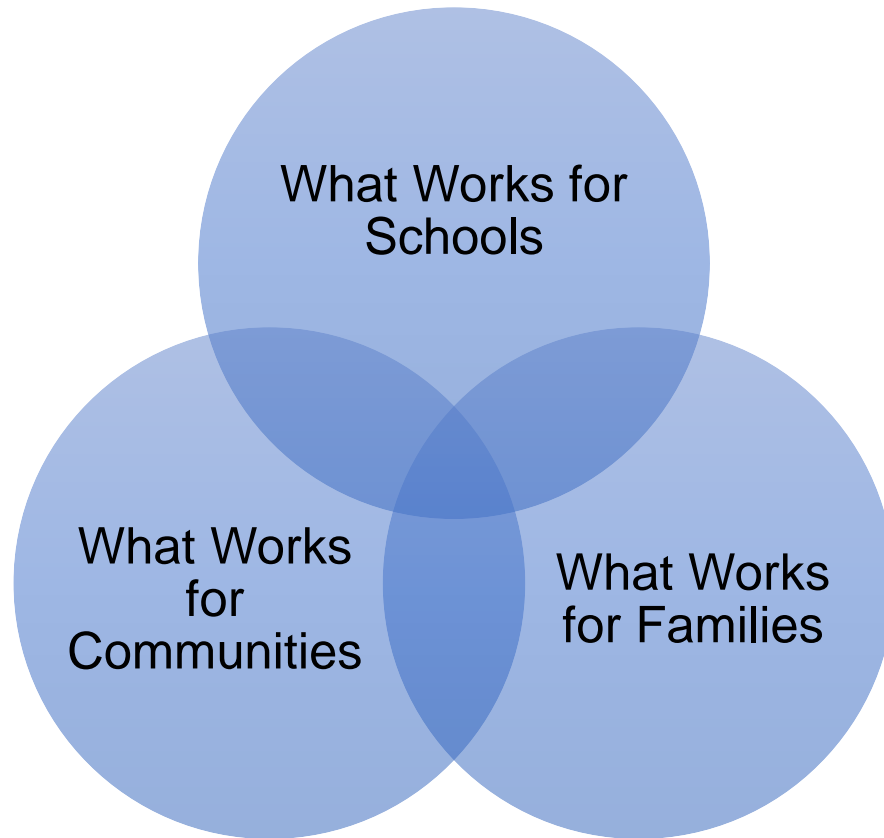
School of Social Sciences, Education and Social Work

---



**THE CENTRE FOR  
EVIDENCE AND  
SOCIAL INNOVATION**

# Centre for Evidence & Social Innovation

- At CESI we have 130+ academics working together with professionals and communities



# What Works Research Methods

- 
- 
- Research Synthesis
  - Exploratory Research
  - Evidence Based Programme Design
  - Programme Implementation
  - Programme Evaluation
  - Participatory Research

# Research Synthesis



- Systematic Reviews/Meta-analysis
- Feed into all what works research methods
- What works for educational attainment?
- Education Endowment Foundation
  - Improving Attainment in High FSM Schools
  - Design & Evaluation Studies
  - Teaching and Learning Toolkit
  - <https://educationendowmentfoundation.org.uk/>

## The Concept of a Systematic Review



# EEF - Teaching and Learning Toolkit

Toolkit	Toolkit Info	Toolkit Filter	Pupil Premium Calculator	Latest Updates	Downloads
About the Toolkit					
Using the Toolkit					
Pupil Premium Calculator					
Videos and Case Studies					
Approaches A-Z					
	Feedback	£££££	★★★★★	+8 months	
	Meta-cognition and self-regulation	£££££	★★★★★	+8 months	
	Peer tutoring	£££££	★★★★★	+6 months	
	Early years intervention	£££££	★★★★★	+6 months	
	One to one tuition	£££££	★★★★★	+5 months	
	Homework (Secondary)	£££££	★★★★★	+5 months	
	Collaborative learning	£££££	★★★★★	+5 months	
	Phonics	£££££	★★★★★	+4 months	
	Small group tuition	£££££	★★★★★	+4 months	
	Behaviour interventions	£££££	★★★★★	+4 months	
	Digital technology	£££££	★★★★★	+4 months	



# EEF – Teaching and Learning Toolkit

EEF / Evidence and Data / Toolkit A-Z

About Document Library Share Contact Log In

Education Endowment Foundation

Search Site

Evidence and Data / Projects / Evaluation / Apply for Funding / News & Events / Support Us

Evidence and Data		TOPIC	COST	EVIDENCE	IMPACT
Toolkit A-Z	Repeating a year	£ £ £ £ £	🔒 🔒 🔒 🔒 🔒	-4 months	
About the Toolkit	Setting or streaming	£ £ £ £ £	🔒 🔒 🔒 🔒 🔒	-1 month	
Using the Toolkit	Block scheduling	£ £ £ £ £	🔒 🔒 🔒 🔒 🔒	0 months	
Families of Schools Database	School uniform	£ £ £ £ £	🔒 🔒 🔒 🔒 🔒	0 months	
Videos and Case Studies	Physical environment	£ £ £ £ £	🔒 🔒 🔒 🔒 🔒	0 months	
Publications	Performance pay	£ £ £ £ £	🔒 🔒 🔒 🔒 🔒	0 months	
EAL Review	Aspiration interventions	£ £ £ £ £	🔒 🔒 🔒 🔒 🔒	0 months	
TA Campaign: Report	Teaching assistants	£ £ £ £ £	🔒 🔒 🔒 🔒 🔒	+1 month	
TA Campaign: Tender for Advocacy Partners	Homework (Primary)	£ £ £ £ £	🔒 🔒 🔒 🔒 🔒	+1 month	
	Mentoring	£ £ £ £ £	🔒 🔒 🔒 🔒 🔒	+1 month	

**Toolkit Filter**

Keywords

Average Impact

Cost

Evidence



# Exploratory Research

- Outcomes focused
- Big Data
- Looking for Patterns
  - Risks
  - Predictors
  - Hypotheses



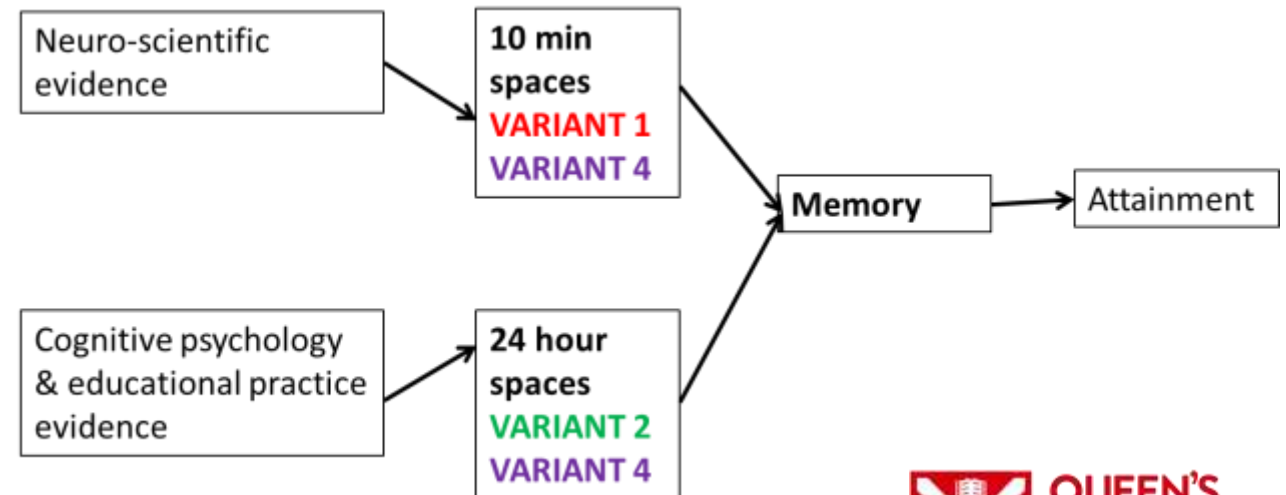
Administrative Data  
Research Centre  
Northern Ireland



**ARK** Northern Ireland  
ACCESS RESEARCH KNOWLEDGE

# Evidence Based Programme Design

- Participation and Partnership
  - Researchers, Teachers, Communities etc.
  - Knowledge Mobilisation/Knowledge translation
- Evidence
  - Systematic Reviews
  - Practice wisdom
- Logic Modelling
  - Outcomes, Activities and Theory
- Feasibility
- Optimisation

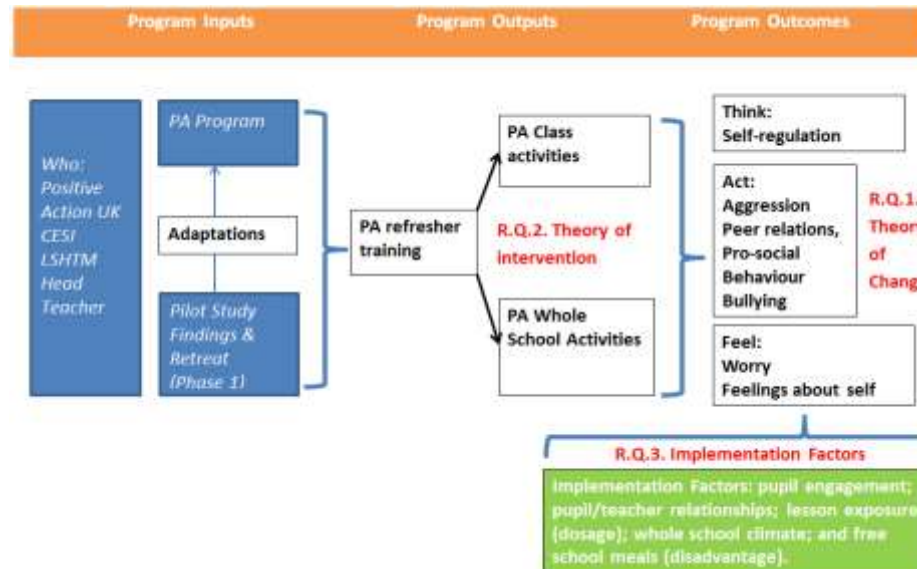
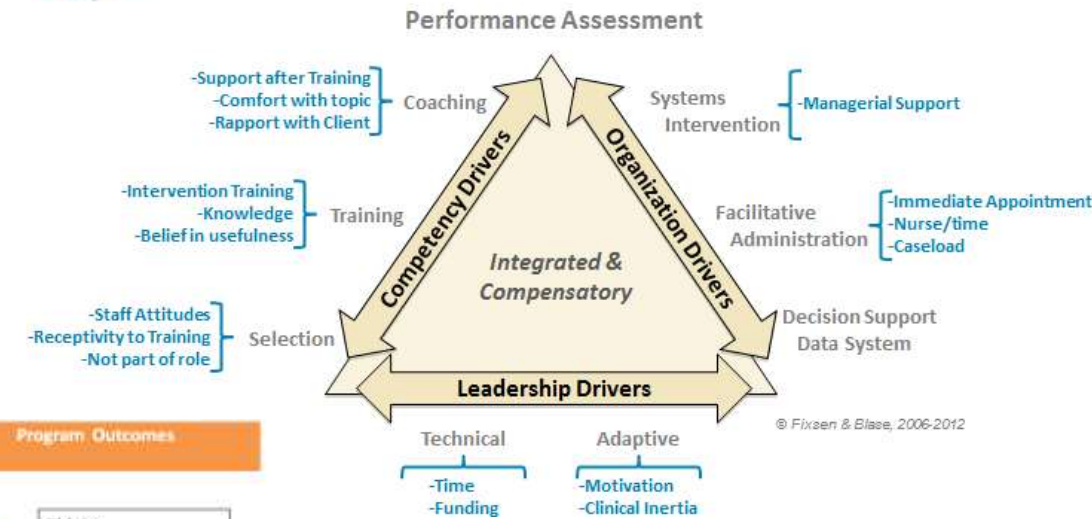




# Evidence Based Programme Implementation

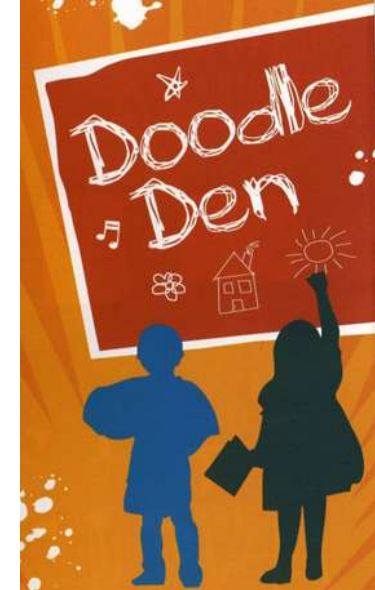


- Logic Modelling
  - Outcomes, Activities and Theory
- Implementation Strategy (Macro)
- Implementation Factors (Context)
  - Engagement
  - Dosage
  - Fidelity
  - Disadvantage



# Evidence Based Programme Evaluation

- Exploring effectiveness on outcomes (trials)
- Making good decisions
- Financial considerations
- Going to scale
- Primary studies
  - Feed back into SRs



# Programme Evaluation

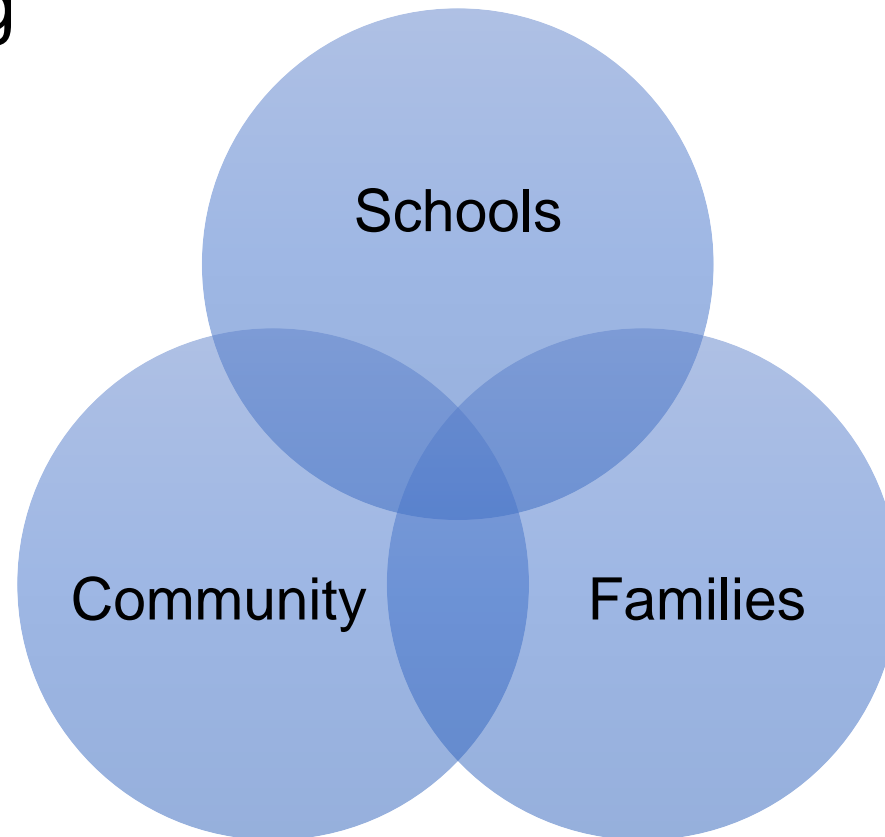


## Transforming Education



# Participatory approaches

- There is a need for joined up thinking, solutions and partnership working





# Partnership Working



**Colin  
Neighbourhood  
Partnership™**

- Teaching school alliance
- Innovation Zones
- Holistic Model & Partnership Working
- Tackling Disadvantage/Reaching Potential
- Outcomes Focused
  - Pathfinder Conversations - Framework & PEI Supports
  - Music Education Programme (partnership with UO)



**HALLAM TEACHING  
SCHOOL ALLIANCE**  
National Teaching School since 2011 at Notre Dame High School

# Thank You!

<b>CESI Website</b>	<a href="https://www.qub.ac.uk/research-centres/cesi/"><u>https://www.qub.ac.uk/research-centres/cesi/</u></a>
<b>CESI Twitter</b>	<a href="https://twitter.com/CESI_QUB"><u>twitter.com/CESI_QUB</u></a>
<b>My Email</b>	<a href="mailto:l.ohare@qub.ac.uk"><u>l.ohare@qub.ac.uk</u></a>
<b>My Twitter</b>	<a href="https://twitter.com/lohare"><u>twitter.com/lohare</u></a>
<b>Research articles</b>	<a href="https://www.researchgate.net/profile/Liam_Ohare"><u>https://www.researchgate.net/profile/Liam_Ohare</u></a>

**Connolly, P., Biggart, A., Miller, S., O'Hare, L. and Thurston A., (2017) *Using Randomised Controlled Trials in Education. SAGE***

