

Relationships in the round in adult safeguarding: messages from English research

Jill Manthorpe
Social Care Workforce Research Unit,
King's College London
@jillmanthorpe
@scwru

Adults at risk who have care and support needs and are unable to protect themselves (Care Act 2014)

Local Authorities (LAs) and partners are responsible for safeguarding or protecting adults at risk from neglect and abuse

Lots of reasons why people need care and support

Lots of ways in which other people might mistreat or neglect them

Lots of debate about what is safeguarding and what is the 'problem'

This presentation covers ideas about 'safeguarding' relationships, new(ish) areas and their implications for practice

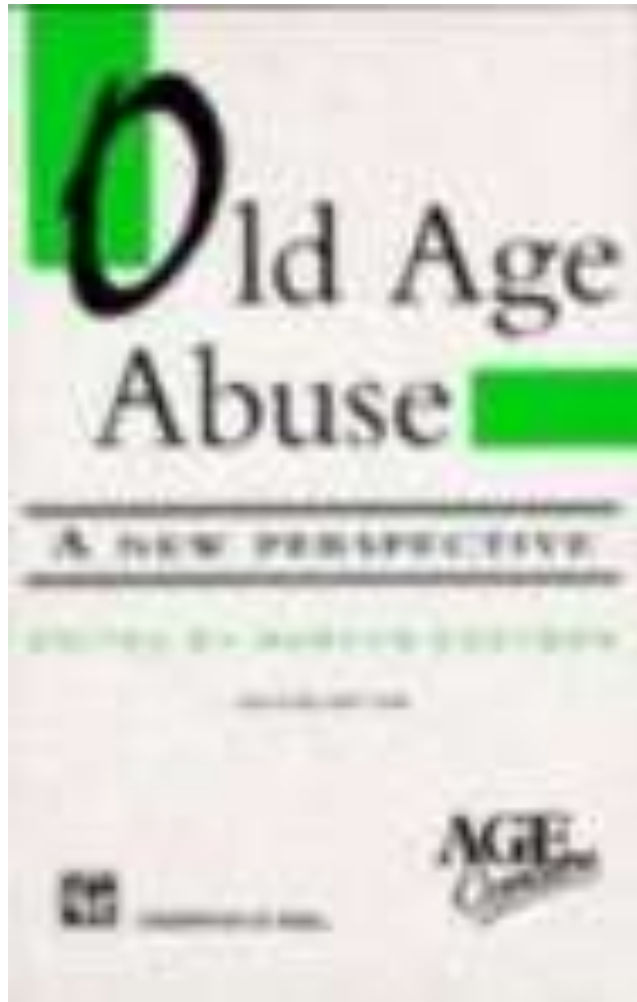


Relationships

- Making Safeguarding Personal
- Access, obstruction, and hindering
- System and professional relationships
- Virtual and online
- Family dynamics



In the beginning (nearly)



- Granny battering
- Family violence
- Carer stress



Making Safeguarding Personal: changing relationships

- Asking what people want to happen
- Involving them in meetings and plans
- Making use of representative & advocates
- Providing & producing information
- Recording & sharing
- Outcomes focussed response:
- More on response menu



Implications for practice

- Idea of MSP as being practice framework – very acceptable
- Experiments with Family Group Conferences and Mediation
- Strong support from service professionals and belief that it is making a difference
- Interesting implementation study



Access, obstruction and hindering

- Scale and nature of the ‘problem’
- Very limited numbers but memorable and resource intensive
- Risky to have intervention powers
- Scotland’s experiences very few – data inconclusive; too soon for Wales
- Obstructive carers – pulling together practice wisdom; support for frontline; preparedness to go to law
- Limited research on situations where decision making capacity IS affected or MH



Practice implications

- Collecting data and collective MDT debates
- Sharing good practice
- Being clear about the risks of action & inaction
- Having good evidence to pass to lawyers
- Thinking more and consulting on coercion and control

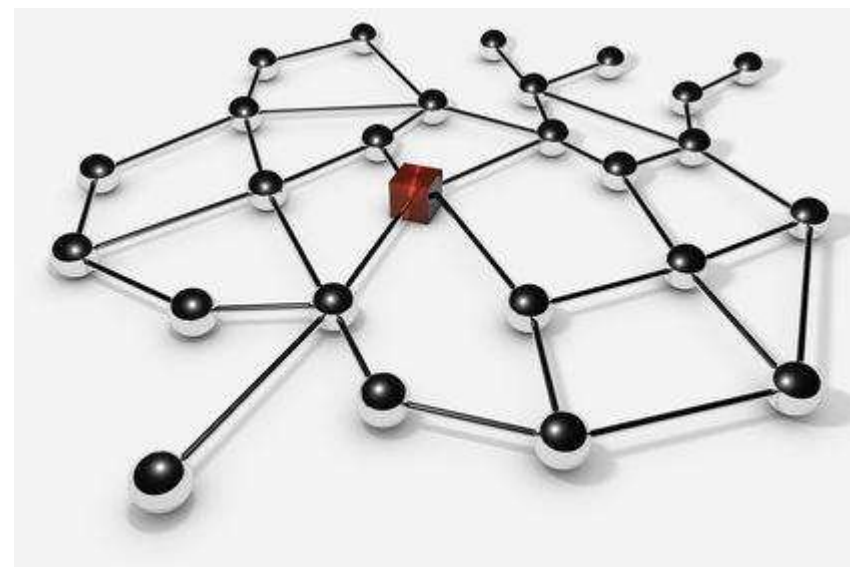


System & professional relationships

Our analyses of Safeguarding Adult Reviews (previously Serious Case reviews) highlighted: eg

- Lack of relationships/sight of self-funders
- Variable relationships between NHS with care homes
- Lack of co-ordination & communication

- Inquiry reports tend to focus on problems (inevitably)



Practice implications

- Value of opportunities for discussion, CPD, etc
- Important to be multi-agency
- Need to spell out quality assurance systems in agencies – develop capacity in their conduct
- Lessons from reviews of what went wrong – being SMART and monitored



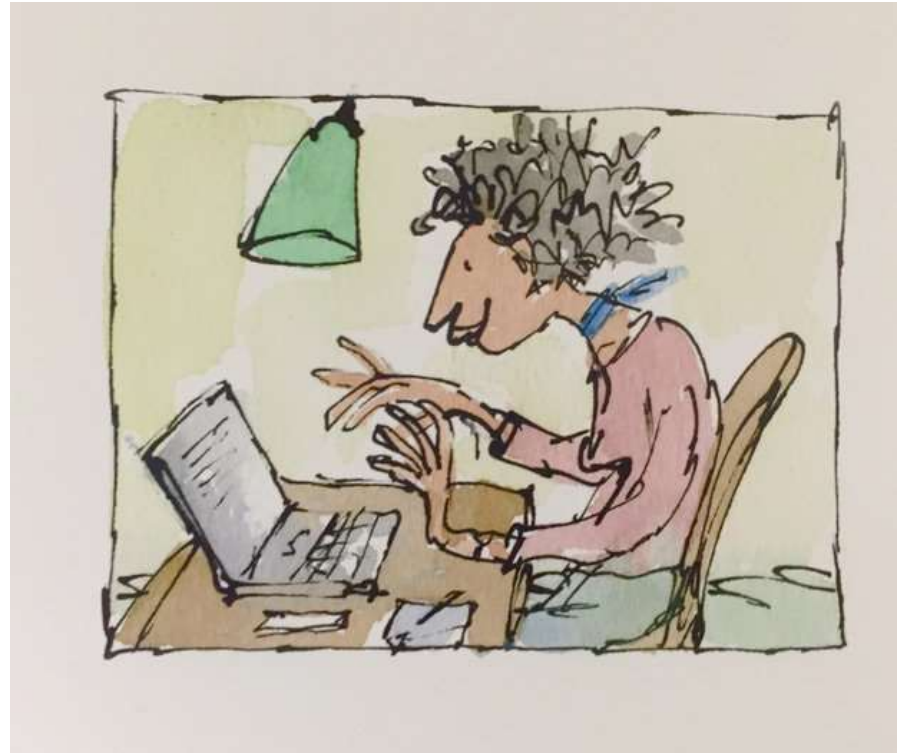
Virtual and online

- Scams, fraud etc – part of financial abuse
- Challenge to ‘abuse within a relationship of trust’
- Was encouragement of IT accompanied by cautions?
Future proofing
- What have we learned from this?
- Role of communities
- Social exclusion of IT non-users



Implications for practice

- Remembering indicators of financial abuse eg debt, hardship
- False friends and grooming
- Screening for volunteers
- Relationships with trading standards
- Power of peer advice

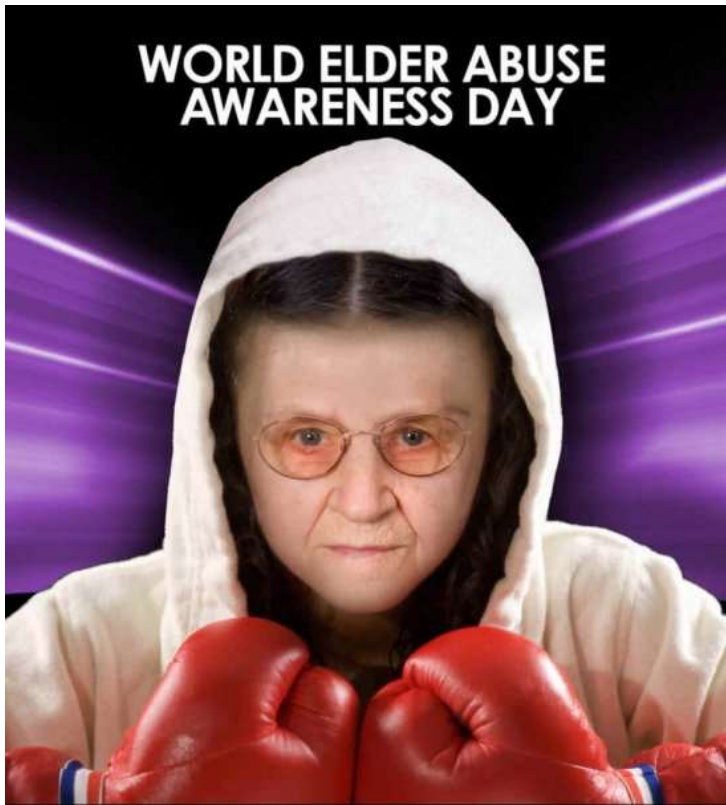


Family dynamics

- Vulnerability & precariousness of some Links to coercion
- Invisible pressures
- Fear
- Confidence & capacity of 'helping professionals'
- Potential to confuse neglect with self-neglect
- NB cuckooing



Implications for practice



- Is it safe to ask? Ask
- Frame the question and validate
- Assess, action and recording
- Victim/perpetrator labels sometimes unhelpful
- Using local resources eg Mediation, Family Group Conferences, Relate, Counselling, Therapy, etc

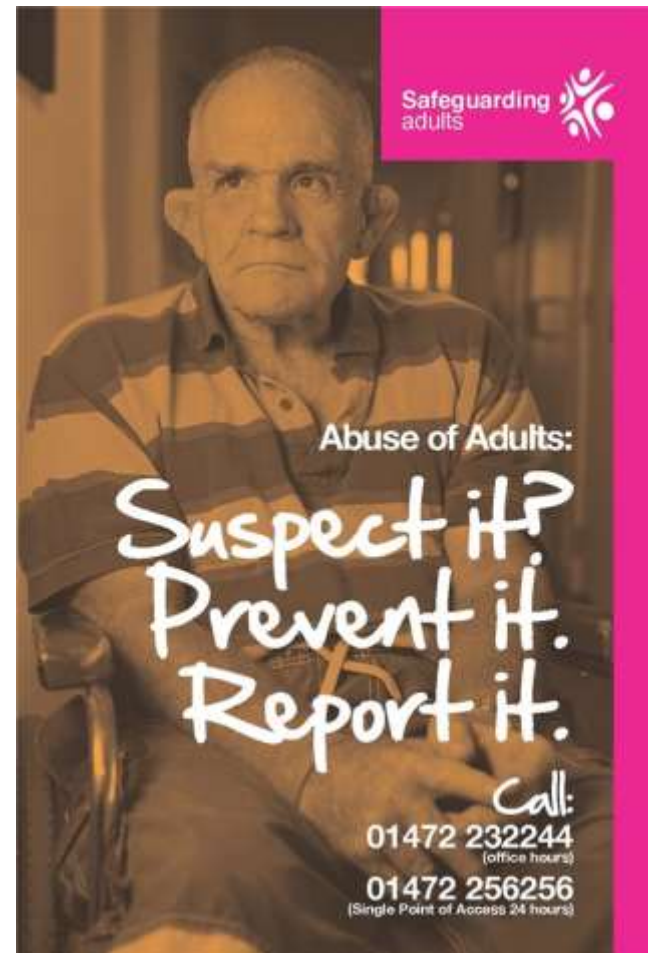
Implications for practice

- Is it safe to ask?
- Ask
- Frame the question and validate
- Assess
- Action and recording
- Victim/perpetrator labels sometimes unhelpful



Concluding points

- New understandings of relationships
- Old tools eg genogram, ecomaps - revitalise
- Need for recording; supervision, discussion and local maps of resources and trends
- Resources – SCIE, JAP



Thanks for listening! (& thanks to studies' participants and funders – the usual disclaimers apply)

jill.manthorpe@kcl.ac.uk